



## A1331 Link Road Phase 1 – Contractor Introduction

Project Newsletter | Issue #1  
April 2025

Dear Neighbour,

We are **Octavius Infrastructure** writing to introduce ourselves to you as the appointed lead contractor for Phase one of the A1331 Link Road. We are very pleased to be working in the area and delivering this project for Essex County Council.

Our site team and subcontractors will be operating from our compound located close to where the new road will tie-into the existing A133.

We're excited to share the latest updates and progress on the project, and we look forward to keeping you informed as we move forward.



### What's happened so far

We've been hard at work setting up the site, including installing boundary fencing, setting up welfare areas, and creating safe walking routes around the site for everyone's safety.

To keep traffic moving smoothly during the project, we've removed the central reservation on the A133, allowing us to realign traffic lanes. This will help us build the new roundabout in phases while minimising disruption.

Our environmental team has been busy conducting surveys and putting measures in place to protect local wildlife. We've also cleared vegetation, taking care to avoid the bird nesting season. We've started diverting both overhead and underground utilities, including electricity, water, and telecoms, to make way for the upcoming construction. Work is also underway on several key elements, including installing deep drainage systems, excavating and constructing the new route for pedestrians and cyclists, digging new ponds, ditches, and swales to manage water flow. We've also begun stockpiling materials in preparation for the earthworks season ahead.

We're making great progress and will continue to keep you updated!





## Road closures

As we continue our works, it is necessary to begin to close the side roads. These closures include:

### LOVEROSE LANE – FULL CLOSURE

**Between 9:30am – 3:30pm, Monday 17th March to Friday 21st March.**

During this closure we will be carrying out widening works to allow passing places prior to the full closure of Tye Road

### TYE ROAD – FULL CLOSURE

**From 31st March until the completion and opening of the A1331 Phase 1.**

During this closure we will be constructing the main body of works for Phase 1 of the A1331. This closure will remain in place until the completion and opening of the A1331 Phase 1.

Diversion routes are outlined below and overleaf. Figure 1 shows the diversion plan for the Tye Road closure and figure 2 shows the diversion plan for Loverose Lane closure.

### A133 – OVERNIGHT FULL CLOSURE

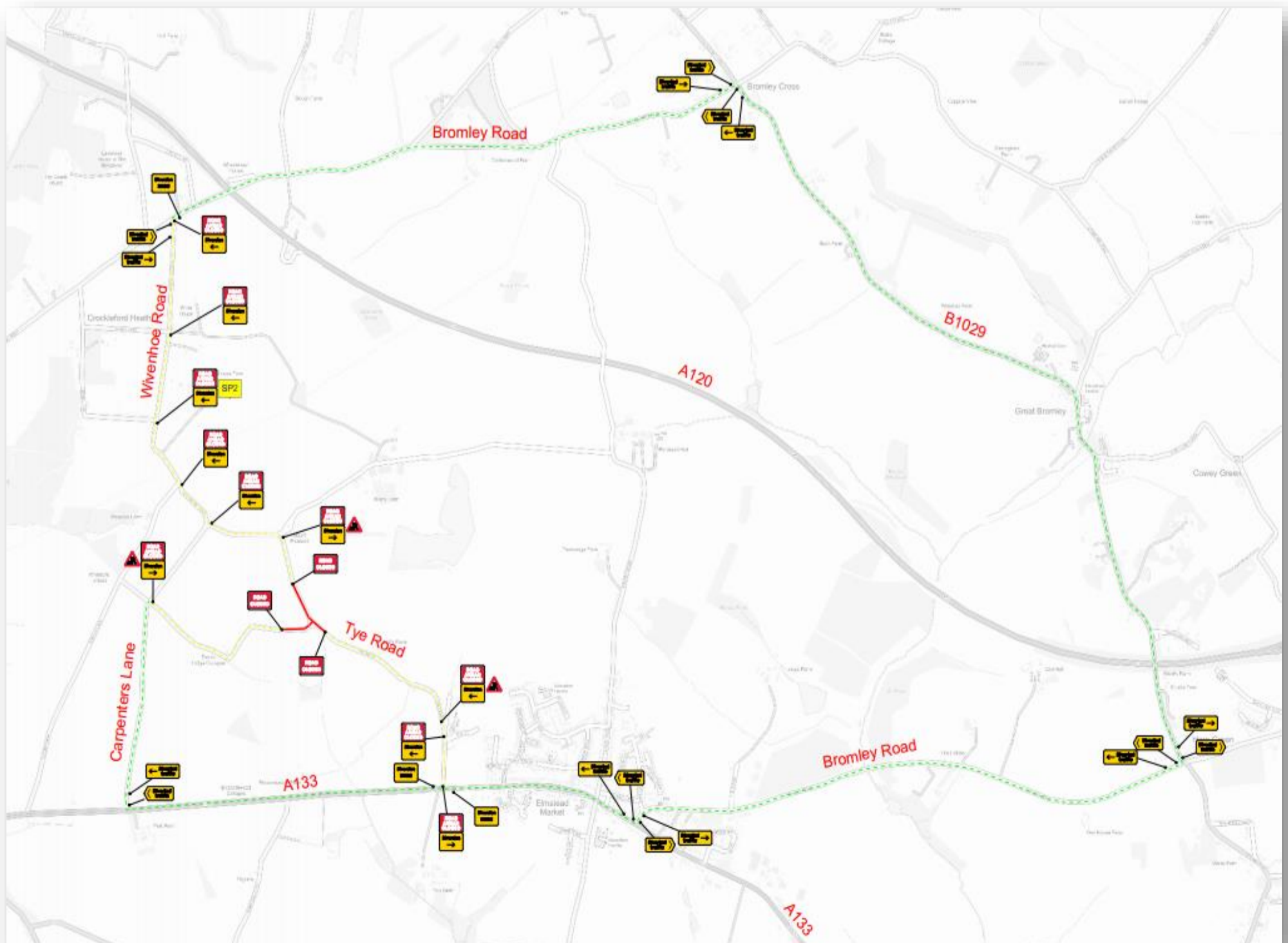
**Between 8pm until 5am, nightly from 1st April to 17th April.**

During this closure, we will be carrying out works for the new roundabout on the A133 and realignment on the approaches. The closures will be predominantly eastbound with westbound closures on 13th-14th April.

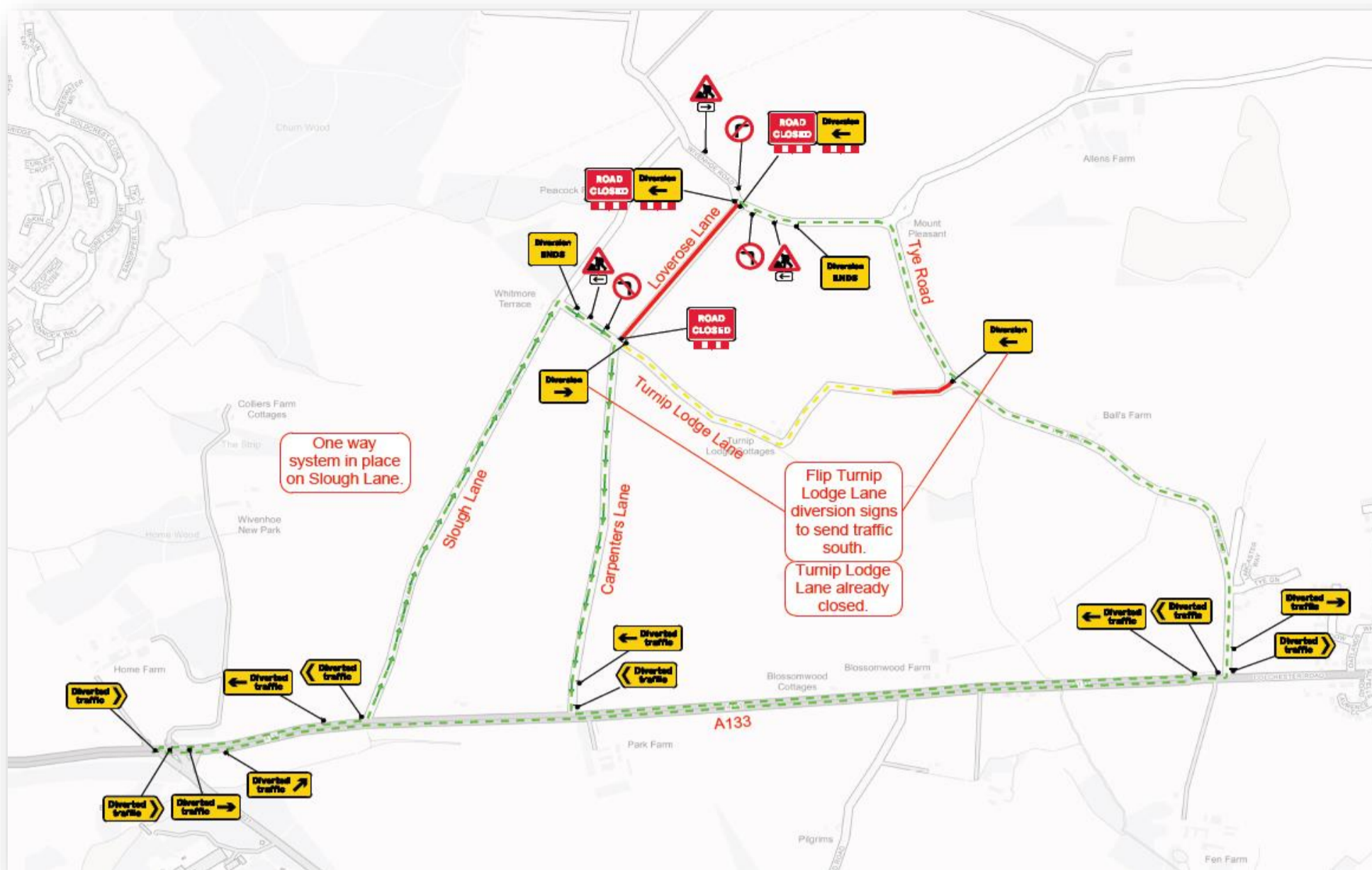
We will work with residents/businesses located within the works areas to ensure access is maintained, however some minor delays may be experienced whilst key activities are in progress.

We apologise in advance for any inconvenience that this may cause. We understand any disruption on the roads is frustrating and will be working closely with Essex County Council throughout the project to minimise this as much as possible.

**FIGURE 1 – Diversion plan for Tye Road**



**FIGURE 2 – Diversion plan for Loverose Lane**



**What's happening next**

Over the coming months we will begin installing passing bays on Loverose Lane and implement a one-way system, allowing the temporary closure of Tye Road for essential improvements. The deep drainage system installation will be completed, helping to manage water flow effectively. We will begin construction on the new A1331 roadway, creating better infrastructure for the area. The public footpath on the A133 will be relocated to maintain safe access for pedestrians. Works will start on the northern half of the new A133/A1331 roundabout, which includes installing drainage, curbs, and street lighting/furniture. We will continue excavations for new ponds, ditches, and swales helping manage water flow and improve the environment. Installation of fencing around the site will also begin, to ensure safety as work progresses. We're excited to continue making progress and will keep you updated as things move forward!



**Meet the team**

**Paul Browne**  
Project Director



**Steve Cooper**  
Project Manager



**Sarah O'Mahoney**  
Social Value Manager



**James Devoir**  
Senior Site Manager



**Elliott Dye**  
Project Manager

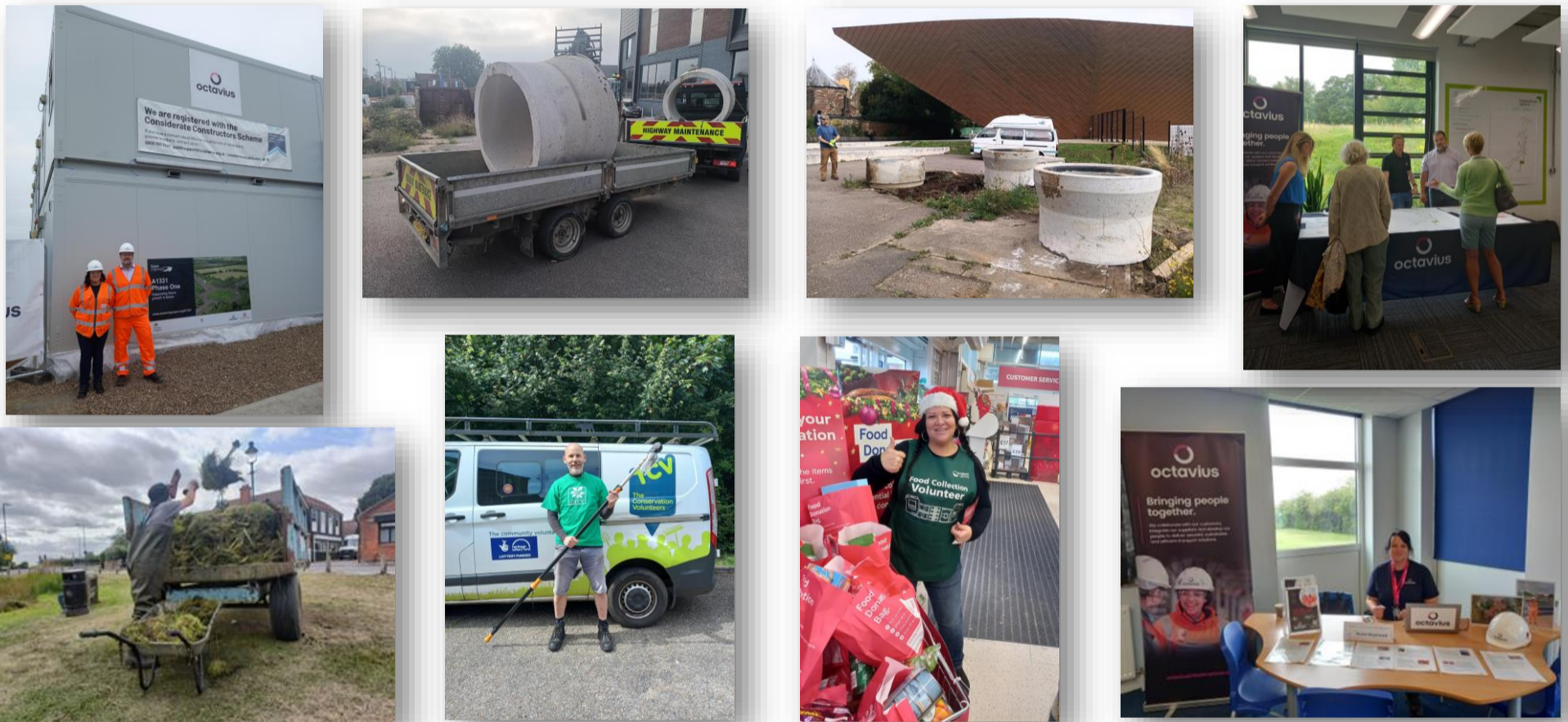




## Sustainability

Since the beginning of the project, we have been adding social value across Essex. Our staff have generously volunteered their time and actively participated in a range of community and environmental initiatives. We supported The Conservation Volunteers by attending events in Wivenhoe to remove self-seeded whips from Lower Lodge Farm Green and worked at Danbury Pond to eliminate the invasive species *Crassula Helmsii*. Our team also took part in WWF's annual 'Great Wild Walk' at Epping Forest, raising funds for wildlife conservation. Our commitment to local communities continued with Beth Chatto Plants and Gardens, where we donated pipes for their planter project and volunteered at Tesco in Tiptree to support their Christmas Food Collection.

We joined other employers at the 'Careers Leaders Day' held at County Hall, Chelmsford, where we met teachers and careers officers and talked about our work with schools and colleges. We hosted a 'Meet the Contractor' event at the Innovation Centre, Colchester, alongside Essex CC, Jacobs, and Milestone, inviting the public to learn about the project.



### Want to know more?

Periodic updates will be issued to keep our neighbours informed of the progress of works, upcoming works, and the social value and community engagement activities that we will deliver within the local community.

If you have any queries or concerns about our construction activities or social value delivery, please do not hesitate to contact us. You can reach the Octavius Infrastructure A1331 Link Road Project Team via:

**Email:** [LinkRoad@octavius.co.uk](mailto:LinkRoad@octavius.co.uk) | **Telephone:** 01737 944 726

For general project or wider scheme enquiries please contact Essex Highways via:

**Telephone:** 0345 603 7631 | **Email:** [A1331@essexhighways.org](mailto:A1331@essexhighways.org)

If you have a **general highway enquiry or problem**, not related to the project please report it to the Highway Authority via the online form at: [www.essex.gov.uk/enquiries](http://www.essex.gov.uk/enquiries) or call 0345 603 7631